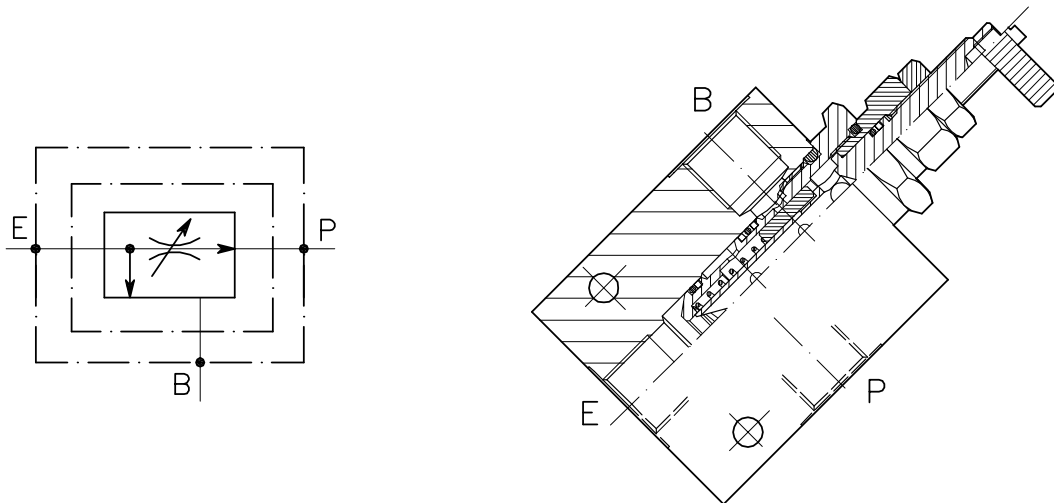


VRF-CN-3V-C-...-L-...

REGOLATORE DI FLUSSO PRIORITARIO A CARTUCCIA CON
ECCEDENZA IN SCARICO E COLLETORE

CARTRIDGE STYLE FLOW CONTROL VALVE
WITH IN LINE BODY

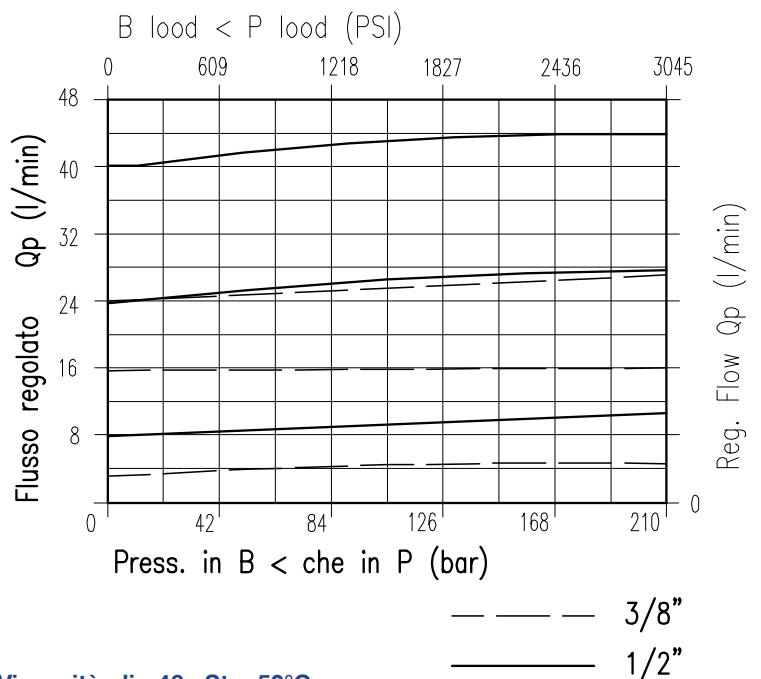


CARATTERISTICHE

| | |
|--------------------------|-----------------------------------|
| Luce nominale | DN 6 |
| Portata min/max | 1/45 l/min - 0.26/11.9 GPM |
| Pressione di lavoro max. | 210 bar - 3045 PSI |
| Temperatura ambiente | -30°C + 50°C |
| Temperatura olio | -30°C + 80°C |
| Filtraggio consigliato | 50 micron |
| Peso | 0.426 Kg. 3/8" GAS |
| Peso | 0.526 Kg. 1/2" GAS |

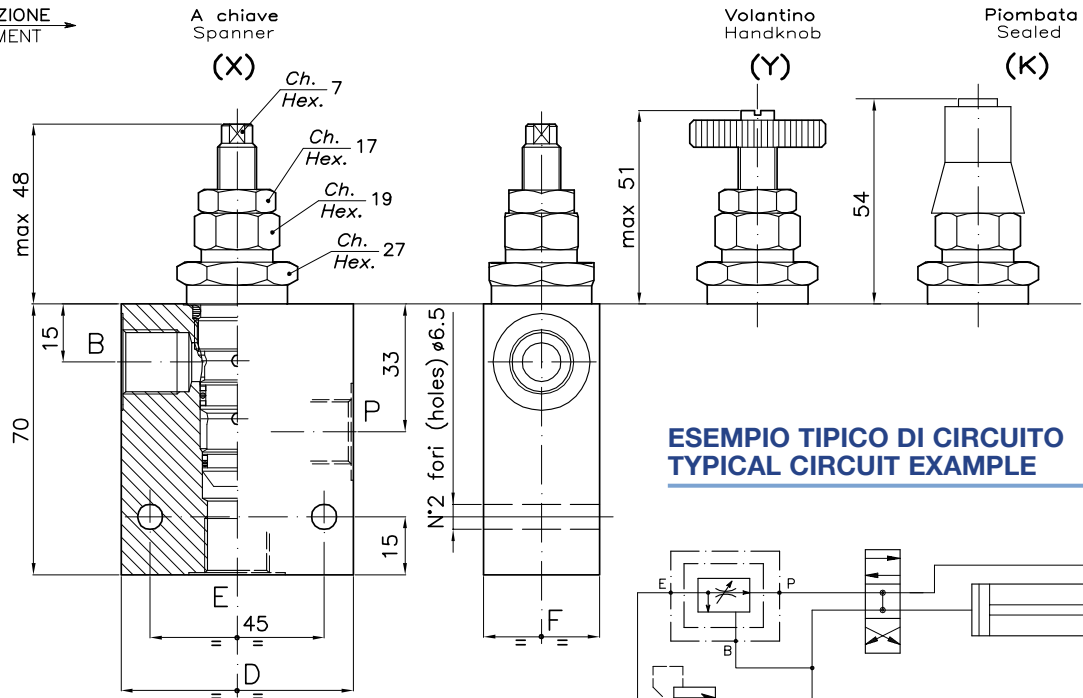
PERFORMANCE

| |
|------------------------|
| Rated size |
| Min/max flow-rate |
| Max working pressure |
| Room temperature |
| Oil temperature |
| Recommended filtration |
| Weight |
| Weight |



Viscosità olio 46 cSt a 50°C
Oil viscosity 46 cSt at 50°C

REGOLAZIONE
ADJUSTMENT →



ESEMPIO TIPICO DI CIRCUITO TYPICAL CIRCUIT EXAMPLE

DIMENSIONI DIMENSIONS

| NUMERO VALVOLA VALVE NUMBER | D | F | Attacchi Port size E-P-B GAS (BSPP) | Portata max Max flow-rate l/min - GPM |
|--------------------------------|----|----|--|---|
| 016 | 60 | 30 | 3/8" | 30-7.9 |
| 017 | 70 | 35 | 1/2" | 45-11.9 |

CODICE DI ORDINAZIONE HOW TO ORDER

004 016 0 X 0

Numero valvola / Valve number

016

017

Regolazione
Adjustment

| | |
|---|----------------------|
| X | A chiave - Spanner |
| Y | Volantino - handknob |
| K | Piombata - Sealed |