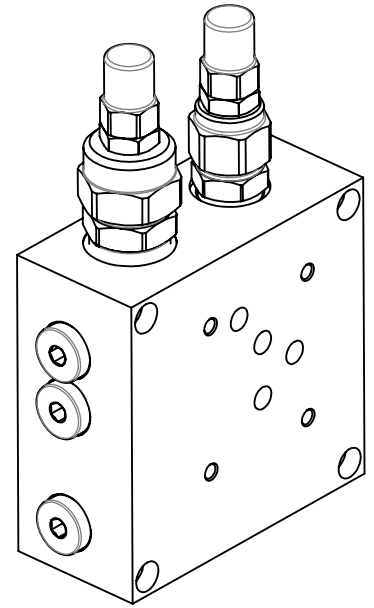
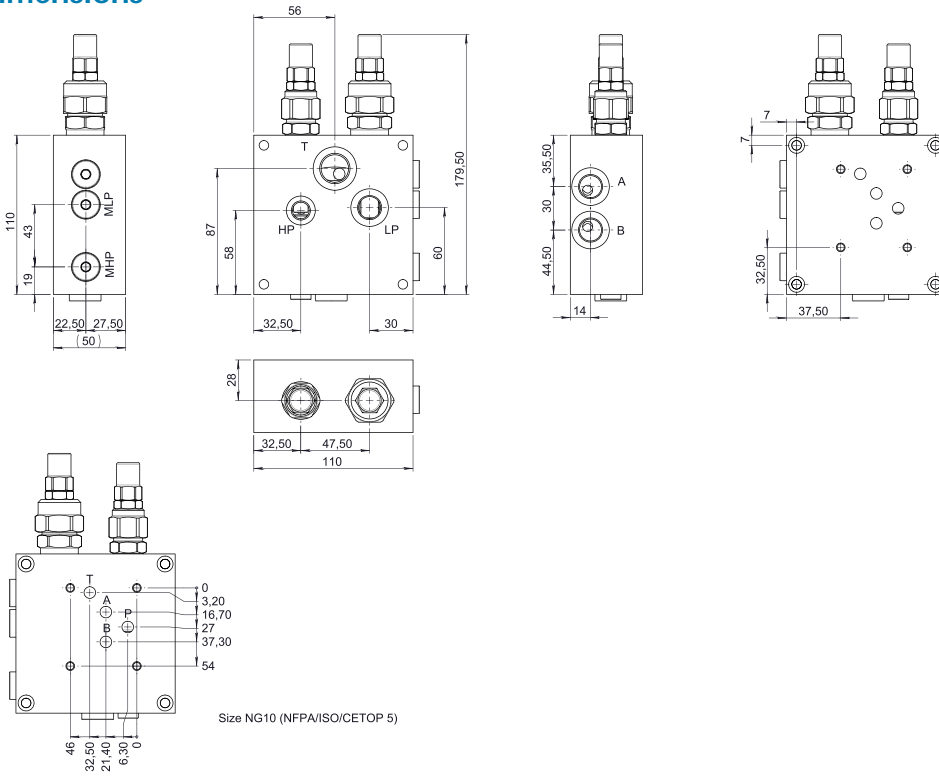
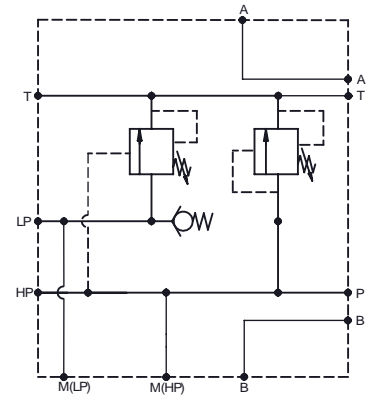


Dimensions

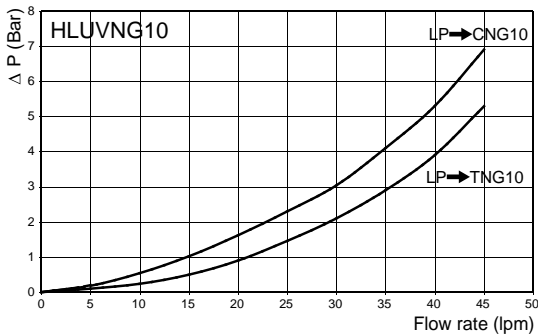


HP BSP	LP BSP	T BSP	A BSP	B BSP	M(HP) BSP	M(LP) BSP
1/4	3/8	1/2	3/8	3/8	1/4	1/4

Hydraulic Symbol



Curves



Features

Max Flow Rate LP→C (lpm) **45**

Materials: Zinc plated steel cartridge, hardened steel inner parts.
Aluminium manifold.

Ordering Code

HLUV NG10

LP - Spring (bar)

10	5-50
20	20-260

HP - Spring (bar)

20	40-210
30	100-350